

Specifications iR5870C/Ci and iR6870C/Ci

Type Maximum Original Size	Console A3
COPY SIZES Cassette Stack Bypass	A5R - A3, 305x457mm, SRA3, 330x483mm 100x148.5mm - 330x483mm
RESOLUTION Scanning Copying Printing	600dpi x 600dpi 600dpi x 600dpi 2400dpi equivalent x 600dpi, 256 Gradations
COPY/PRINT SPEED A4 B/W A4 Colour A3 B/W A3 Colour First copy time Warm-Up Time Multiple Copies/Prints Duplexing	58ppm (iR 5870), 68ppm (iR 6870) 16ppm (iR 5870/6870) 28ppm (iR 5870/6870) 8ppm (iR 5870/6870) Black-and-White : 5.3 sec, Full Color : 12.2sec 8minutes and 50seconds or less 1 to 9,999 sheets Standard automatic stackless
PAPER WEIGHT Drawers/Cassettes Stack Bypass Duplex	64 to 209g/m ² 64 to 250g/m ² 64 to 209g/m ² for B&W, 64 to 163g/m ² for Colour
Cassette Upper Lower	A4 Universal: (A5R to A3, 305x457mm, SRA3, 330x483mm)
PAPER CAPACITY (80g/m²) Standard	1,500 sheets x 2 Cassettes (3,000 sheets) 550 sheets x 2 Cassettes (1,100 sheets) Stack Bypass: 100 sheets
Optional Total paper capacity CPU Memory Hard Disk Drive Interface Power Supply Power Consumption(W) Dimensions (WxDxH) Weight	Side paper deck: 3,500 sheets 7,700 sheets Canon Custom Processor, 666MHz x 1 + 400MHz x 1 1GB 80GB Ethernet (100Base-TX/10Base-T) 230V/8A/50Hz 1.9kW Max. 679 x 852 x 1,191mm Approx. 226kg
COLOUR NETWORK MULTI-PDL PRINTER KIT-L1 (STANDARD FOR iR6870Ci, 5870Ci) PDL Resolution Memory Hard Disk CPU PS Fonts PCL Fonts Supported OS PCL PS UFR II Mac-PPD Interface Network Protocol Pull Scan	PCL5c, PostScript3 Emulation and UFR II 2400 equivalent x 600dpi 1GB (Uses Main unit RAM) 80GB (Uses Main unit HDD) Canon Custom Processor, 666MHz x 1 + 400MHz x 1 Roman136 Roman80, Bitmap1, Barcode30, OCR2 Windows 98/ME/NT4.0/2000/XP/2003 Windows 98/ME/NT4.0/2000/XP/2003, Mac OS X (10.2 or later) Windows 2000/XP/2003, MacOSX (10.1.5 or later) Mac OS 8 or later Ethernet (100Base-TX/10Base-T), USB 2.0 TCP/IP (LPD/Port9100/IPP/PPS/SMB/FTP), IPX/SPX (NDS, Bindery), AppleTalk Network TWAIN Driver (75 to 600dpi 24bit color /8bit grayscale/Black & white)
COLOUR NETWORK PRINTER UNIT-G1 (FOR iR6870C, 5870C) PDL Resolution Memory Hard Disk CPU PS Fonts PCL Fonts Supported OS PCL PS Interface Network Protocol	Adobe PostScript 3, PCL 5c 2400 equivalent x 600dpi 256MB to 512MB(Optional) 80GB Intel Celeron-M 1.2GHz Roman138 Roman113(including Barcode Fonts) Windows 98/ME/2000/XP/2003, Mac OS 9.2/X (10.2.4 or later) Windows 98/ME/2000/XP/2003 Ethernet(1000Base-T/100Base-TX, 10Base-T) TCP/IP(LPD/FTP/Port9100/IPP/SMB), IPX/SPX(NDS, Bindery), AppleTalk

COLOUR UNIVERSAL SEND KIT-E1 (STANDARD FOR iR6870Ci, 5870Ci) Scan Speed Scan Resolution Destinations Address book File Format Single Multi	70 ipm: A4 300dpi 100dpi, 150dpi, 200x100dpi, 200dpi, 200x400dpi, 300dpi, 400dpi, 600dpi E-Mail/Internet FAX(SMTP), PC(SMB, FTP, NCP), iWDM LDAP, Local(Max.1800) TIFF, PDF, JPEG TIFF, PDF
DADF(STANDARD) Paper Size Paper Weight Max. Number of originals Document Scanning speed (max.)	A3-A5R Single sided original: 42 to 128 g/m ² Double sided original: 50 to 128 g/m ² 100 sheets (80 g/m ²) 50 ipm (A4), (Colour/B&W 600dpi)
PAPER DECK-U1 (OPTIONAL) Paper Size Paper Weight Paper Capacity Dimensions(W x D x H) Weight	A4 64 to 209 g/m ² 3,500 sheets (80 g/m ²) 326 x 583 x 569.5 mm Approx. 46 kg
FINISHER-R1 Number of trays Tray capacity Staple position Staple capacity Dimensions Weight	2 tray (+ optional tray 1) A4-A5R :1000 sheets A3: 500 sheets Corner, Double A4: 50 sheets (80 g/m ²) A3: 30 sheets (80 g/m ²) 663 x 653 x 928mm Approx. 35kg
SADDLE FINISHER-R2 Number of trays Tray capacity Staple position Staple capacity Saddle Stitch Specifications Paper size Staple capacity Paper weight Dimensions(W x D x H) Weight	2 tray (+ optional tray 1) A4-A5R :1000 sheets A3: 500 sheets Corner, Double, Saddle Stitch A4: 50 sheets (80 g/m ²) A3: 30 sheets (80 g/m ²) A3, A4R 1 to 15 sheets (60pages, 64-80g/m ²) 1 to 10 sheets(40pages, 81-105g/m ²) 64 to 105g/m ² (64 to 250g/m ² for Cover page) 756 x 657 x 928mm Approx. 63.5kg
OTHER ACCESSORIES	Document Tray K1 Additional Finisher Tray A1 Puncher Unit -L1 (2 holes), N1 (4 holes) Shift Tray C1 Copy Tray K1 Staple Cartridge-D3 (for Saddle stitch) Staple Cartridge-J1 Cassette-AA1 Card Reader C1 Card Reader Attachment Kit C1 256MB RAM DIMM Kit (for Colour Network Printer Unit-G1) IR Security Kit-A2 Barcode Printing Kit-A1 Security Expansion Board-E1 Web Access Software-D1 PDF High Compression Kit-A1 Universal Send PDF Encryption Kit-B1 Universal Send Searchable PDF Kit-A1 Super G3 Fax Board-U1 Key Switch Unit-A2 Accessibility Handle-A1 Voice Guidance Kit-A2 Remote Operator's Software Kit-A1
Some images are simulated for clarity of reproduction. All data is based on Canon's standard testing methods. This leaflet and the specifications of the product have been developed prior to the date of product launch. Final specifications are subject to change without notice. ® and ©: All company and/or product names are trademarks and/or registered trademarks of their respective manufacturers in their markets and/or countries. Canon's GENUINE logo means Quality all-round performance. For more information, go to www.canon-europe.com/Canon_Copier_Consumable_Technology	

you can
Canon

**iR5870C/Ci
iR6870C/Ci**
Multifunctional Printers

High speed black & white perfection
- with smart colour

Bring added intelligence
to your business with the
powerful black & white
multifunctional that
features smart colour.



iR5870C/Ci / iR6870C/Ci

you can
Canon

falcon
We make it simple

FREEPHONE: 0800 08 22224
Head Office: Falcon House, The Forum, Icknield Way, Tring, Herts. HP23 4JX

www.falconcopiers.co.uk



Conforms to the International Energy Star program as an MFP and Copier



Canon's GENUINE logo means quality all-round performance



e Maintenance

meap
POWERED BY



Canon Europa NV
Conservation Partner



Key benefits of the iR5870C/Ci and iR6870C/Ci include:

Reduced costs

Automatically detects when only black & white is required. So you only pay for colour when it's needed.

Effortless productivity

With an exceptionally fast performance, your staff spend less time waiting for documents to print, and more time focusing on their core tasks.

Easy manageability

You stay firmly in control of who is authorised to print in colour – and who isn't. All of which helps to keep running costs down.

Future flexibility

Simple modular options enable you to grow your printer fleet as your needs change.

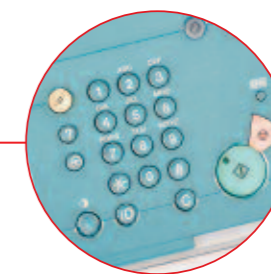
Environmentally friendly

At Canon, we're committed to helping the environment, and the iR5870C/Ci and iR6870C/Ci are no exception, with a sleep mode which helps to cut power consumption when the machine is sitting idle.

iR5870C/Ci & iR6870C/Ci – At a glance



Ease of use
A large colour menu-driven touch-screen makes the printer simple to use.



Super G3 Fax
Super G3 Fax option enables you to communicate instantly.



Control
Netspot Accountant MEAP accurately accesses usage and costs per user or Department IDs.



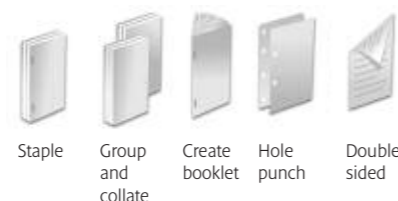
Finishing the job
Choose from a range of finishes, including hole punching, stapling and saddle-stitching.



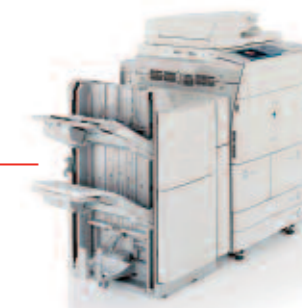
Improve productivity
With 4 cassettes as standard you can print up to 4100 sheets.



Produce more
The optional 3500 sheet paper deck ensures optimum output.



Get more with the
iR5870/6870C/Ci



Demand more from your office environment

The iR5870C/Ci and iR6870C/Ci gives your business more. More value by reducing unwanted colour pages. More room to grow, with simple, modular options to tailor to your exact needs. More ways for your staff to communicate effectively with customers – and each other. And more productivity and control with speed of print and simple user settings.

Automatic colour detection

The iR5870C/Ci and 6870C/Ci analyse your source documents and files, automatically determine which are in colour and print or copy them accordingly. That way you only pay for colour when you use it. No copyshops and no hanging around for desktop printers.

Stay in control of costs

The built in ID management allows you to specify who can and what is printed in colour – just one of the ways you can keep control of costs. Here's another: add Netspot Accountant MEAP to the iR5870C/Ci or 6870C/Ci, and you can accurately assess usage and costs by user, group or department. The result – outstanding office communication within the financial parameters you specify.

Improved communication

There's a whole new way to manage document workflow and communicate more effectively with the iR5870C/Ci or 6870C/Ci. Your staff can capture, manage and communicate information with outstanding clarity in black & white and colour. **And now, the new fax option built into these powerful multifunctional printers gives you even more choice in how to distribute your documents, matching your needs perfectly.**

A choice of models

If you need superbly fast performance, the iR6870C/Ci's exceptionally quick 68 pages per minute (ppm) in black & white, plus 16ppm in colour, makes it the ideal choice, while the iR5870 C/Ci (58ppm in black & white and 16ppm in colour) also offers excellent benchmarks. When it comes to other business needs, their modular design lets you build in the capabilities you want.

No wonder the iR5870C/Ci and 6870C/Ci are the intelligent choice for forward thinking businesses.





The intelligent way to ease your workload

With the iR5870/6870C/Ci, you and your colleagues can produce professionally finished documents and add extra clarity and power to your written communications – all from the comfort of your desks. Your working day just got a whole lot easier.

Access for all

The iR5870 and 6870C/Ci have a host of options which make it easy for everyone to use. Disabled users can operate system functions from a laptop or desktop PC using the Remote Operator's Software Kit, while visually impaired users can receive audible job confirmation through the Voice Operation Kit* and an ADF handle allows users in wheelchairs to close the document feeder.

Speed up in-house production

Now you can produce professional documents – with none of the drawbacks of using copyshops. In addition to automatic collation, hole punching and variable position stapling, users can choose from an impressive range of finishes – even producing colour saddle-stitched booklets. And with speeds of up to 65 ppm accompanied by an on-line paper capacity of up to 7,700 sheets, production's fast – very fast.

Add Canon's iW Publishing Manager software, and you can speed up production still further. Bespoke documents? Straightforward. Combine, personalise and manipulate files from Word, PPT, Excel and other sources. Then move pages around, delete pages, annotate text, and set up the finishing features intelligently after verifying the output.

Send directly to email

By using Canon's Universal Send (standard on iR58/6870C/Ci) or eCopy, you and your colleagues can scan documents at up to 70 ipm in black & white or colour, then send them to different sources such as PC, email or fax, simultaneously. You can even minimise the risk of unauthorised distribution by encrypting and password-protecting PDFs. And, with searchable PDF (OCR) Mode you can scan using keywords and create searchable files to locate information quickly.

Outstanding document communication is now at everyone's fingertips

Did you know?

Sales teams can produce attractive proposals and price lists that make purchasing more likely.

Human Resources people can produce high-quality information that makes staff feel more valued.

Accounts departments get better results when invoice totals and pay-by dates are indicated in colour.

* English Only



Perform at your peak with the iR5870/6870C/Ci



The set up that's smart and simple to run

It's the perfect balance between intelligence and simplicity. The iR5870C/Ci and iR6870C/Ci integrate easily into your IT infrastructure, adding fresh levels of control, security and support.

Improved performance

As you'd expect, these multifunction printers support any PCL and PostScript printing environment. But they also incorporate Canon's unique UFRIL technology which can enhance printing speeds for Windows applications.

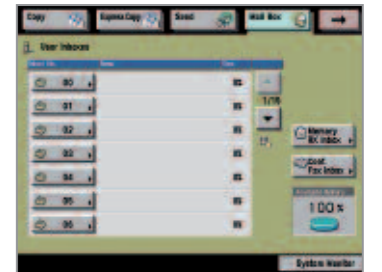
Easy to setup, easy to run

Set up and configuration is easy with Canon's advanced network management tools to bring assured device monitoring and control. Then, if you need to make configuration changes, you can handle them centrally and co-ordinate them remotely across your organisation.

Once it's up and running, you can concentrate on other matters. Canon's innovative eMaintenance facility* enhances reliability still further with direct electronic access to Canon's service centre, enabling the device to report back relevant statistics, co-ordinate service technicians - or even order new toner automatically based on actual usage. Plus, Canon's proprietary Amorphous Silicon Drum (A-Si) technology offers greater resilience to wear and tear than conventional drums.

Security where it's needed

The iR5870Ci and iR6870Ci include powerful security capabilities: user authentication tools permit existing network IDs and passwords to be used so there's no need to set up new identities before employees can start to reap the rewards. Encryption and security features prevent data from being compromised or intercepted by outsiders, and if your business considers protection to be paramount, the optional iR Security Kit initiates the encryption or overwriting of hard disks to completely erase stored data.



Send and store your documents securely on the device with Mailbox.

Future proof investment

Using MEAP (Multifunction Embedded Application Platform), Canon's device-embedded Java based application platform, allows you to incorporate new and customised software and solutions - Netspot Accountant MEAP, for instance - so that you receive a real ongoing return on your investment.



Use and control the device with confidence at your desktop using a familiar web-based interface.

* Please check availability of this option with your local Canon supplier



Why Canon?

For over 70 years Canon has been delivering its leading edge imaging technologies to customers. From image capture, manipulation and management to image printing, transmission and sharing, we are pioneers, committed to excellence throughout all our business sectors across the world.

By investing almost 10% of turnover in innovation, we are able to continually create new technologies that help you do more, while reducing costs, increasing control, and growing your business. But that's not all. We ensure all our new machines feature environmentally friendly software and hardware - including a 'sleep' mode - and that they are manufactured according to the strictest environmental standards.

Kyosei is Canon's corporate philosophy and lies at the heart of our brand, business and sponsorship activities. Kyosei is a Japanese word that means 'living and working together for the common good', a principle that is embraced by all Canon employees throughout our organisation. It shapes our mission and our values, the way we treat people and conduct our business.

Did you know?

Innovation. In 2005 Canon filed nearly 2,000 requests to the US Patents Office making it the 2nd most innovative company on the list.

The environment is a major concern for Canon and we pride ourselves on our links with conservation organisation, WWF, whom we have partnered since 1998.

Awards. Canon recently won prestigious BERTL 'Readers' Choice Awards' for 'Colour and Monochrome Reliability' and 'Best Colour Image Quality'.